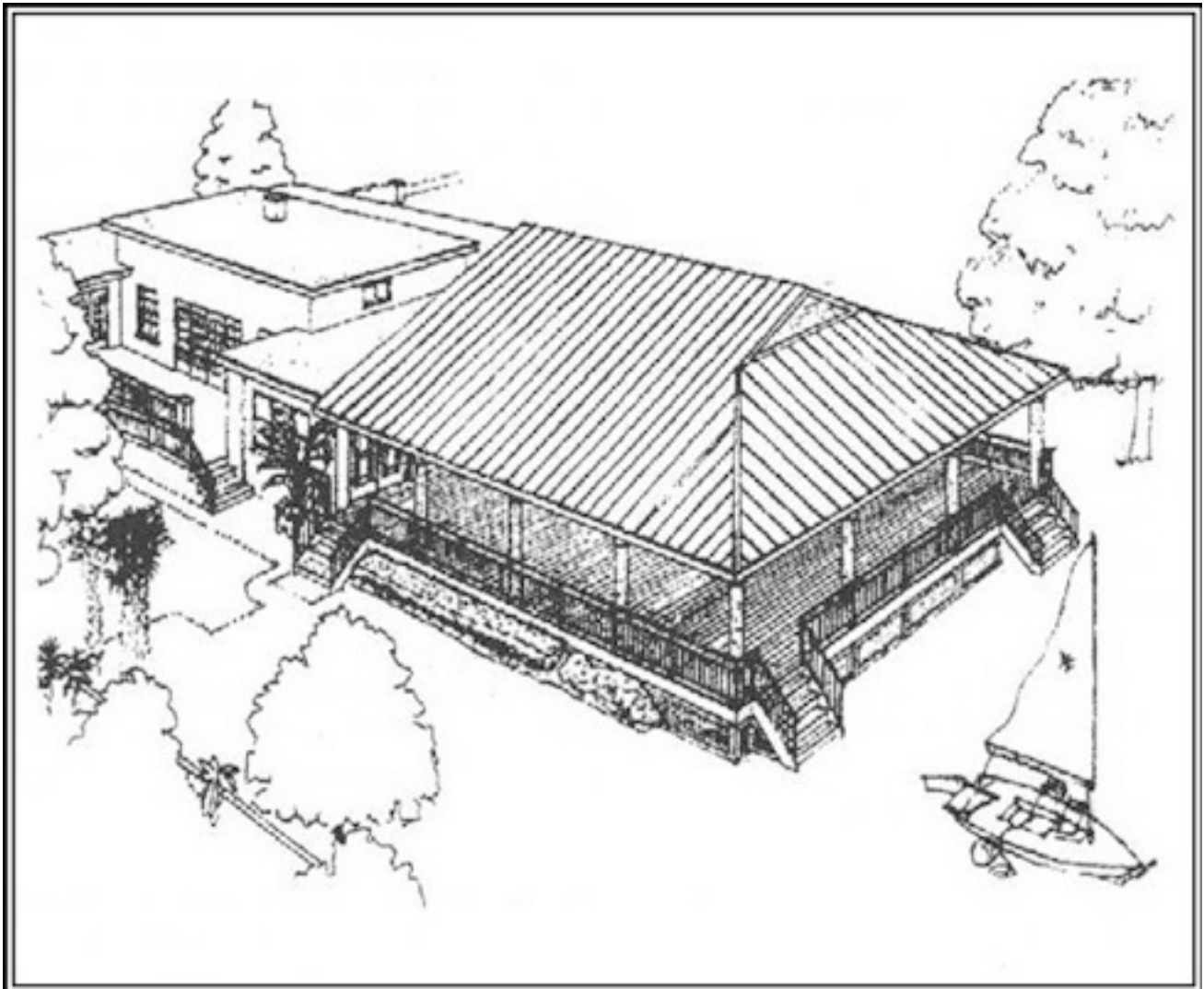


# Palm Beach Sailing Club

Application for Membership



**Palm Beach Sailing Club**

4600 N. Flagler Drive  
West Palm Beach, FL 33407

**561.881.0809**

fax 561.881.1424  
[www.PBSail.org](http://www.PBSail.org)  
[office@pbsail.org](mailto:office@pbsail.org)

## Information about the Palm Beach Sailing Club

Thank you for your interest in our club. We are pleased to offer information about the advantages of membership, dues and fees, and qualifications.

The organization was founded in 1966 to promote sailing, training, racing, cruising, and the camaraderie that sailors share throughout the world. We also welcome power boaters and social members.

The Sailing Club is a private organization, owned by its members, and governed by an annually elected Board of Directors and Flag Officers. All members must apply for membership and be accepted by the Board. Membership is not restricted by age, gender, creed, race, religion, national origin, or sexual orientation. To request membership, an application with a biographical sketch and picture of all applicants must be submitted, including an initial one-time initiation fee and the annual dues amount for the applicable membership category. The Board of Directors holds all monies pending membership approval.

PBSC sponsors year-round sailing and sail training for adults and juniors. We have large and small boat regattas, both offshore and in the Intracoastal Waterway. The summer camp features USSA certified instructors, utilizes club-owned boats, and leads to year-round activities including competitive sailing.

Club sailboats are available for use to members on an annual fee basis with a satisfactory checkout by one of our instructors, or after satisfactorily completing sailing lessons with our instructors.

Small boat storage on PBSC property is available for an additional annual fee. Our beautiful 1920's era clubhouse and two-story boathouse accent our three-acre waterfront property featuring boat storage and launching facilities. The dock extends into the intracoastal waters of Lake Worth with floating docks for the convenience of our members.

Recent property improvements include a large pavilion facing east toward the waterfront that has become popular for a variety of events including weddings, meetings, dinners, etc. Its wide expanse of lawn and water creates a beautiful and unique atmosphere. Monthly dinner meetings with interesting programs are enjoyed by members and their guests in this attractive setting, as well as theme parties throughout the year.

We look forward to welcoming you to membership in the Palm Beach Sailing Club.

### Benefits of PBSC Membership

- Membership in a premier sailing club in a premier sailing location
- Ability to bring guests and entertain at the Club
- Access to the Club's lounge and food services
- Attend meetings, parties, and weekly BBQ's
- May attend all Club social events
- Receive mailings of our monthly newsletter, *The Mainsheet*
- Receive weekly emails and phone announcement of upcoming events
- Discounts on adult and youth sailing classes





**Palm Beach Sailing Club**  
**Annual Membership Dues & Fees**  
**Effective January 1, 2010**

**All Membership  
Categories except  
Former Members**

Initiation Fee (one-time payment) **\$500** \$ \_\_\_\_\_

**Annual Dues**

**Associate – Ages 21-29** Individual, Couple, or Family, ages 21-29 **\$355** \$ \_\_\_\_\_

**Full** Individual, Couple, or Family **\$995** \$ \_\_\_\_\_

**Non-resident** Individual, Couple or Family (Residing in Palm Beach  
County less than 6 months per Year) **\$845** \$ \_\_\_\_\_

**Corporate** Four members (Dues must be paid by one company or  
entity on one date each year; one initial fee; one vote  
per Corporate Membership) **\$2,425** \$ \_\_\_\_\_

**Use of Club Boats** Must be certified by the Club Instructor  
Includes one (1) certification **\$530** \$ \_\_\_\_\_

**Sub Total** \$ \_\_\_\_\_

**Sales Tax 6.5%** \$ \_\_\_\_\_

**Sub Total** \$ \_\_\_\_\_

**Additional Cert Fee** Required for use of Club boats (exempt from sales tax) **\$50** \$ \_\_\_\_\_

**Boat Storage** Storage rates vary by size of boat - See Office

**Race Series** Per schedule - See Office

**Sailing Lessons** Various programs for Adults and Juniors - See Office

**Total Due** \$ \_\_\_\_\_



4600 N. Flagler Drive  
West Palm Beach, FL 33407